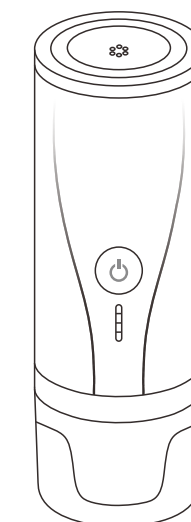


PORTABLE ESPRESSO COFFEE MACHINE

USER GUIDE



- Thank you for purchasing, portable Italian Espresso coffee machine.
- Please choose the one you like most.
- Please read the manual carefully before use and keep it properly for further checking when needed.



Catalogue

- Attentions/charging and LED display 1
- Product structure 2
- Product parameter 3
- P C M 0 0 capsule / ground coffee extraction 4-5
- P C M 0 1 capsule / ground coffee extraction 6
- P C M 0 2 capsule / ground coffee extraction 7
- P C M 0 3 capsule / ground coffee extraction 8
- Product features / cleaning and maintenance 9

Attentions

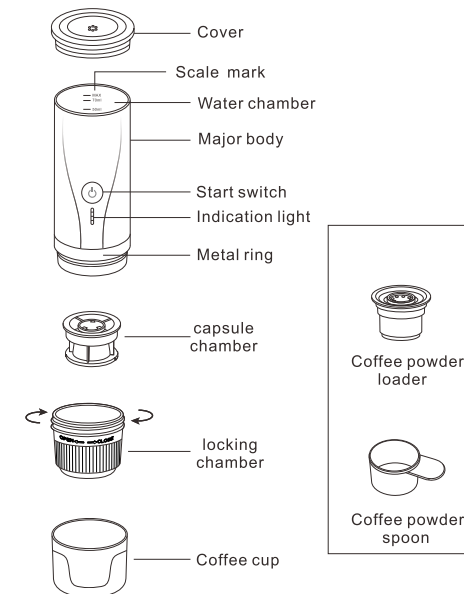
Please read the following carefully before using the coffee machine to avoid personal injury or machine damage.

- * This product is for personal use only.
- * After unpacking, make sure the product is intact and all accessories are complete.
- * Please keep the packaging bags and accessories out of the reach of children.
- * When charging this product, keep it away from children.
- * This product is prohibited from high temperature environment and direct sunshine exposure.
- * During extraction, the pressure chamber shall be tightened as much as possible to avoid that the capsule cannot work properly due to leakage during extraction.
- * For model PCM 02/03, before each time heating, make sure that water has been added, do not heat if no water is added. Dry-boiling will lead damage to this product.
- * In some cases of continuous heating, the machine will self-protection due to overheating. The machine can continue working after cooling down for about 10 minutes.
- * While charging, make sure the coffee machine is under monitoring (especially when use in vehicle) to avoid risk caused by improper charging.
- * When using the coffee machine, please make sure that the locking chamber and the machine body are screwed tightly to prevent water leakage. When drinking, be careful of hot coffee.
- * Do not place the coffee machine in gas or electric burner, oven, microwave or dishwasher. Please ONLY use purified water.
- * The amount of water added shall not exceed the maximum mark.
- * During the heating process, do not open the water chamber cover to avoid hurt by boiling water. When taking out the coffee capsule after extraction, be careful of high temperature.
- * After each time use, please wipe the surface of the machine with a towel.
- * Do not use any parts not recommended by Unauthorized or unidentified parts using may cause damage to the machine.
- * If the coffee machine has breakdown, please stop using it.

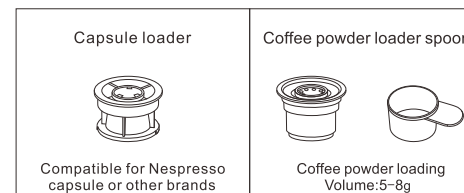
Coffee machine charging and LED display

- * Please charge with the charging cable included in the product package.
- * For (PCM01 / PCM 02 / PCM 03) with charging function, please first step check whether the machine battery has power or not. One touch to the switch, the LED light displays the current machine power (1-light: 25% 2-light: 50% 3-light: 75% 4-light: 100%).
- * Use a 5V/2A adapter to charge the product.
- * During charging, the LED lights flashes to show the charging is on going. When the machine is charged to 100% power, 4 LED lights are on for 1 minute and then turns off.
- * During operation period, if the LED light flashes for 5 times and turns off in turn, means the machine is with low power and needs to be charged.
- * When starts PCM03, if the LED light flashes for 5 times and if the LED light flashes for 5 times and one light is on for 2 seconds, the machine is in low power and cannot heat, but extraction is ok.
- * During charging, any LED light flash indicates that the battery is not fully charged.

Product structure

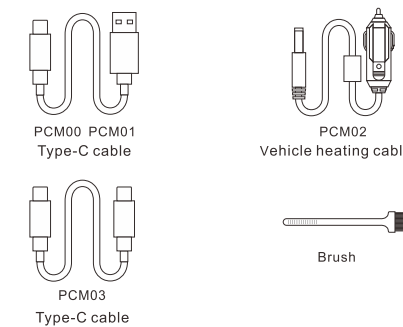


Caution: When using this coffee machine, please select the correct accessories!



Product parameter

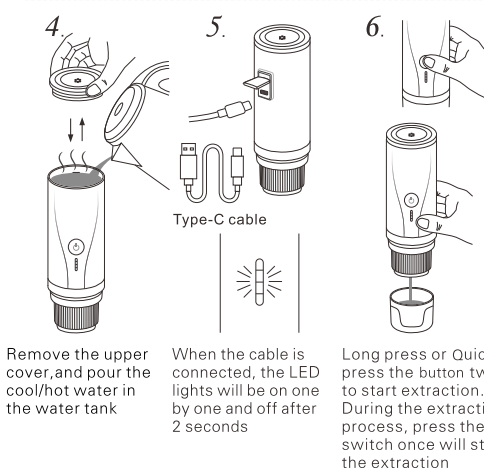
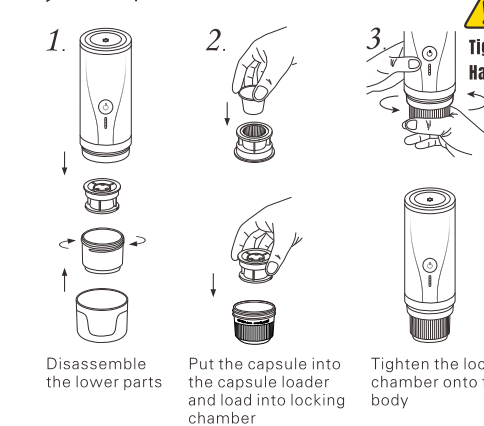
Style	Basic	Basic	Vehicle type	Versatile
Model	PCM00	PCM01	PCM02	PCM03
Product picture (69-69-203MM)				
Water chamber material	Food grade plastics	Food grade plastics	Food grade Stainless steel	Food grade Stainless steel
Pressure	15bar	15bar	15bar	20bar
Net weight	455g	500g	540g	640g
Built-in battery	No battery	1800mAh Extraction only	1800mAh Extraction only	7500mAh Heating & Extraction
Power	6W	6W	90W	90W
Charging Voltage	5V	5V	5V/12V	5V
Volume	Max.120	Max.120	Max.80	Max.80
Extraction type	Extraction With power supply	Off-line extraction	Off-line extraction	Off-line extraction
Extraction temperature Celsius Fahrenheit	100°C 212°F	100°C 212°F	96°C 205°F	96°C 205°F
Heating	NO	NO	YES	YES
Compatible For	Nespresso and compatible capsules / coffee powder	Nespresso and compatible capsules / coffee powder	Nespresso and compatible capsules / coffee powder	Nespresso and compatible capsules / coffee powder



Product instructions

This product is a portable electric Italian coffee machine designed for coffee lovers. It supports extraction of ground coffee and capsule. When using this machine, please follow below instruction

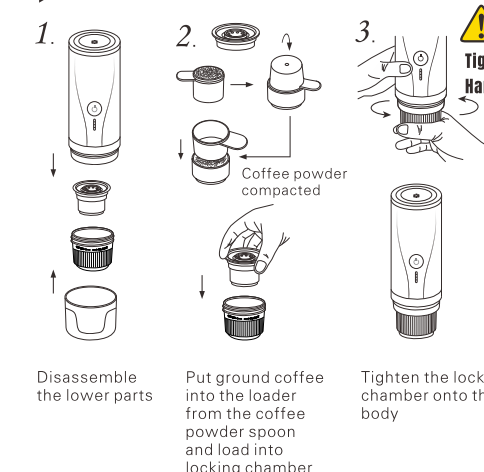
1. Capsule extraction



2

PCM00

2. Ground coffee extraction



4. 5. 6. (Same as the capsule extraction)

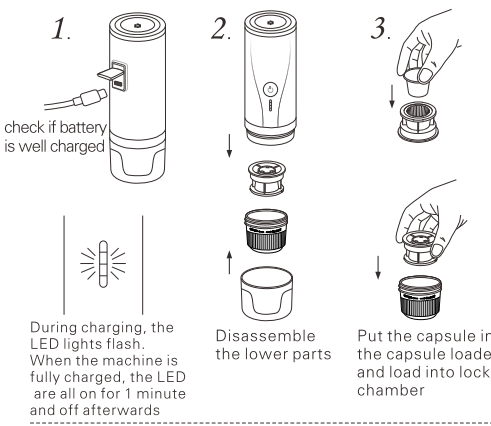
3

PCM01

Product instructions

This product is a portable electric Italian coffee machine designed for coffee lovers. It supports extraction of ground coffee and capsule. When using this machine, please follow below instruction

1. Capsule extraction



4. 5. 6. (Same as the capsule extraction)

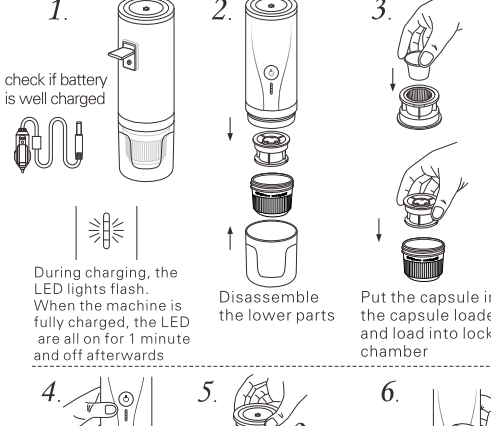
4

PCM01

Product instructions

This product is a portable electric Italian coffee machine designed for coffee lovers. It supports extraction of ground coffee and capsule. When using this machine, please follow below instruction

1. Capsule extraction



4. 5. 6. (Same as the capsule extraction)

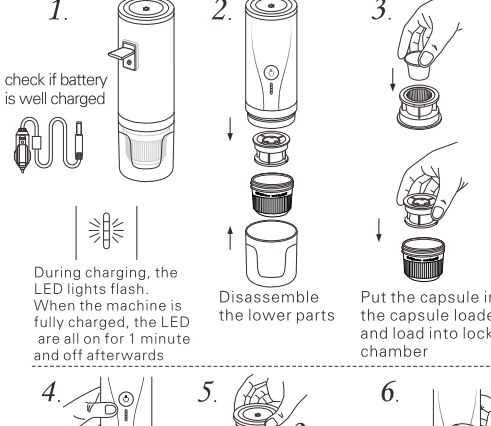
5

Car Use PCM02

Product instructions

This product is a portable electric Italian coffee machine designed for coffee lovers. It supports extraction of ground coffee and capsule. When using this machine, please follow below instruction

1. Capsule extraction



4. 5. 6. (Same as the capsule extraction)

6

2. Ground coffee extraction

- A. put ground coffee in (same as page 5.)
- B. Extraction (same as page 4, 5 and 6)

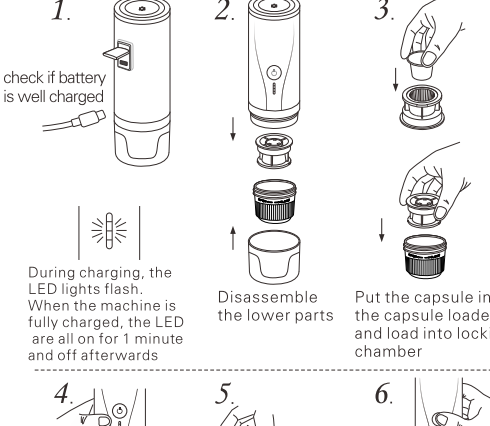
7

PCM03

Product instructions

This product is a portable electric Italian coffee machine designed for coffee lovers. It supports extraction of ground coffee and capsule. When using this machine, please follow below instruction

1. Capsule extraction



4. 5. 6. (Same as the capsule extraction)

7

2. Ground coffee extraction

- A. put ground coffee in (same as page 5.)
- B. Extraction (same as page 4, 5 and 6)

8

Product features

- 1. Compact size & light weight**
It is the smallest and lightest espresso machine in the market, with complete functions and portable.
- 2. Scientific design**
This machine has optimized battery management system to maximize energy & minimum space. The structure is with double-layer heat insulation design, and the materials are all food grade. (PCM02/PCM03) are made with stainless steel.
- 3. Scientific extraction**
We strictly follow the standards recommended by European Coffee Brewing Centre (ECBC), control the temperature, pressure and speed, so as to achieve a cup of coffee with rich crema and fantastic aroma.
- 4. One-key extraction**
Your portable coffee maker has built-in lithium battery. You can start your coffee making with a slight press.
- 5. Two-in-one version**
This coffee machine is compatible with both ground coffee and coffee capsule. One machine with dual-function.
- 6. Two extraction modes (please select the correct product model)**
A. Direct extraction mode: add hot water to quickly extract coffee, which is convenient and fast (compatible model: PCM00/PCM01).
B. Heated extraction mode: the coffee machine is controlled by a built-in heating chip, add cold water to the water chamber for heating, and then complete the coffee extraction (compatible model: PCM02/PCM03).
- 7. Enjoy at any time**
Indoor, in the car, or outdoor, our portable coffee maker can meet your unexpected coffee thirst at any time.
- 8. Universal charging**
With just a Type-C cable and mobile phone charger, this machine is able to travel with you as a good partner.

Cleaning and maintenance

- Before first use, please clean the product to remove the dust that may remain during transportation.
- Do not immerse the body in water! Do not wash the body with direct water flowing. Other accessory parts can be washed with water.
- After each use, please clean the machine. After cleaning, it needs to be dried before storage.
- If you do not use this product for a long time, please store it in a dry environment.

9