

# NEW TRM Brackets TRucker Mount

New series of **Stainless steel brackets** for the installation of CB antennas on TRUCKS

Made of electro-polished Stainless steel to grant the best robustness, they are laser cut to allow an easy installation and to be adapted to the several types of trucks.

You will find below the available Truck brackets including the description and the type of trucks where they are suitable to be mounted.

**TRM-3 (P/N 2522003.00)**



**SIRIO**  
antenne  
MADE IN ITALY

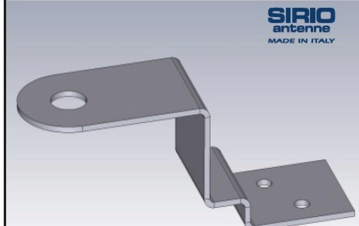
(big antennas, grandi antenne)  
Material: 2.5mm electro-polished stainless steel  
Materiale: Acciaio inox 2.5mm elettrolucidato.

Mounting: (P) driver's side, sun visor upright  
Montaggio: (P) montante aletta parasole lato guida



**SCANIA**  
series from 2012 to 2017


**TRM-4 (P/N 2522103.00)**



**SIRIO**  
antenne  
MADE IN ITALY

Material: 2.5mm electro-polished stainless steel  
Materiale: Acciaio inox 2.5mm elettrolucidato

Mounting: (O) driver's side, above the door by rivets  
Montaggio: (O) sopra porta lato guida tramite rivetti



**MAN**

**TRM-6 (P/N 2522203.00)**



**SIRIO**  
antenne  
MADE IN ITALY

Material: 3.0mm electro-polished stainless steel  
Materiale: Acciaio inox 3.0mm elettrolucidato

Mounting: (P) second upright sun visor on the driver's side. On DAF euro 6 on sun visor first screw driving side  
Montaggio: (P) secondo montante aletta parasole lato guida. Su DAF euro 6 su aletta parasole prima vite lato guida



series XF euro 6




**SCANIA**  
series FH



**RENAULT**  
series T & CONFORT




**TRM-7 (P/N 2522303.00)**



**SIRIO**  
antenne  
MADE IN ITALY

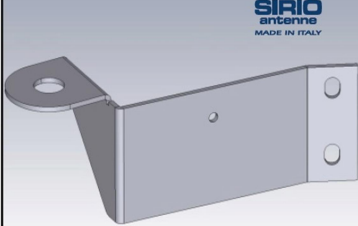
Material: 3.0mm electro-polished stainless steel  
Materiale: Acciaio inox 3.0mm elettrolucidato

Mounting: (O) driver's side, above the door by rivets  
Montaggio: (O) sopra porta lato guida tramite rivetti



series TGA, series TGA


**TRM-12 (P/N 2522403.00)**



**SIRIO**  
antenne  
MADE IN ITALY

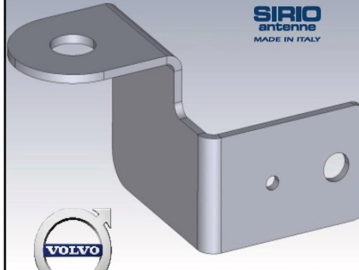
Material: 2.5mm electro-polished stainless steel  
Materiale: Acciaio inox 2.5mm elettrolucidato

Mounting: (V) by using two screws of the vertical upright on the driver's side door  
Montaggio: (V) con le due viti del montante verticale sulla porta lato guida



**IVECO**  
STRALIS, STRALINO, EURO CARGO


**TRM-13 (P/N 2522503.00)**



**SIRIO**  
antenne  
MADE IN ITALY

Material: 3.0mm electro-polished stainless steel  
Materiale: Acciaio inox 3.0mm elettrolucidato

Mounting: (P) second upright of the sun visor on the driver's side  
Montaggio: (P) secondo montante aletta parasole lato guida



FH 1a serie, 1st series FH

The mentioned brands belong to their manufacturers' property and are used only to show the COMPATIBILITY of our accessories' installation. They do not refer to their provenance.

**TRM-19 (P/N 2522603.00)**


Material: 3.0mm electro\_ polished stainless steel  
 Materiale: Acciaio inox 3.0mm elettrolucidato

Mounting: **✓** driving side, mirror spacer  
 Montaggio: **✓** distanziali specchio lato guida

**MAN**
**TRM-22 (P/N 2522703.00)**


(big antennas, grandi antenne)  
 Material: 3.0mm electro\_ polished stainless steel  
 Materiale: Acciaio inox 3.0mm elettrolucidato

Mounting: **✓** driver's side, by the two screws of the door's vertical upright  
 Montaggio: **✓** con le due viti del montante verticale porta lato guida.

**IVECO**

STRALIS nuova serie, new series

**TRM-23 (P/N 2522803.00)**


Material: 3.0mm electro\_ polished stainless steel  
 Materiale: Acciaio inox 3.0mm elettrolucidato

Mounting: **Ⓟ** first upright of the sun visor on the driver's side  
 Montaggio: **Ⓟ** primo montante aletta parasole lato guida


 nuova serie FH,  
 FH new series

**TRM-33 (P/N 2523003.00)**


Material: 4.0mm electro\_ polished stainless steel  
 Materiale: Acciaio inox 4.0mm elettrolucidato

Mounting: **✓** driver's side, vertical upright of the door by rivets  
 Montaggio: **✓** montante verticale porta lato guida tramite rivetti


**SCANIA**

anno 2017, year 2017

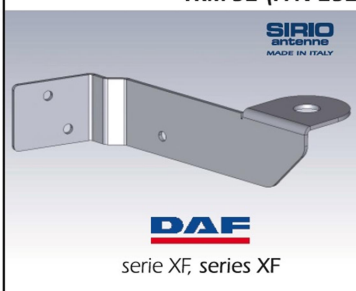
**TRM-42 (P/N 2523103.00)**


Material: 4.0mm electro\_ polished stainless steel  
 Materiale: Acciaio inox 4.0mm elettrolucidato

Mounting: **Ⓟ** driver's side, above the first anchorage of sun visor  
 Montaggio: **Ⓟ** sopra primo ancoraggio lato guida aletta parasole



ACTROS 2016

**TRM-52 (P/N 2523203.00)**


Material: 2.5mm electro\_ polished stainless steel  
 Materiale: Acciaio inox 2.5mm elettrolucidato  
 Mounting: **✓** driver's side door, with the 2 screws and 2 rivets (enclosed) on the vertical upright  
 Montaggio: **✓** porta lato guida, sul montante verticale con 2 viti e 2 rivetti (forniti).

**DAF**

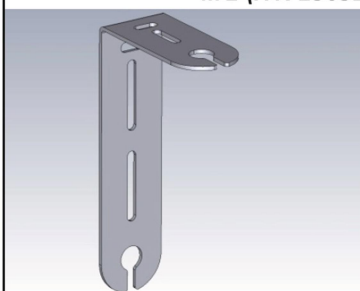
serie XF, series XF

**TRM-111 (P/N 2523303.00)**


Material: 3.0mm electro\_ polished stainless steel  
 Materiale: Acciaio inox 3.0mm elettrolucidato

Mounting: **Ⓟ** driver's side, above the first anchorage of sun visor  
 Montaggio: **Ⓟ** sopra 1° ancoraggio lato guida aletta parasole

**IVECO**  
 EUROCARGO

**M-2 (P/N 2503203.00)**


Material: 2.5mm polished stainless steel  
 Materiale: Acciaio inox 2.5mm lucidato

Mounting: universal bracket with unspecified installation  
 Montaggio: staffa universale per installazione generica

 Mounting positions  
 Posizioni di montaggio
